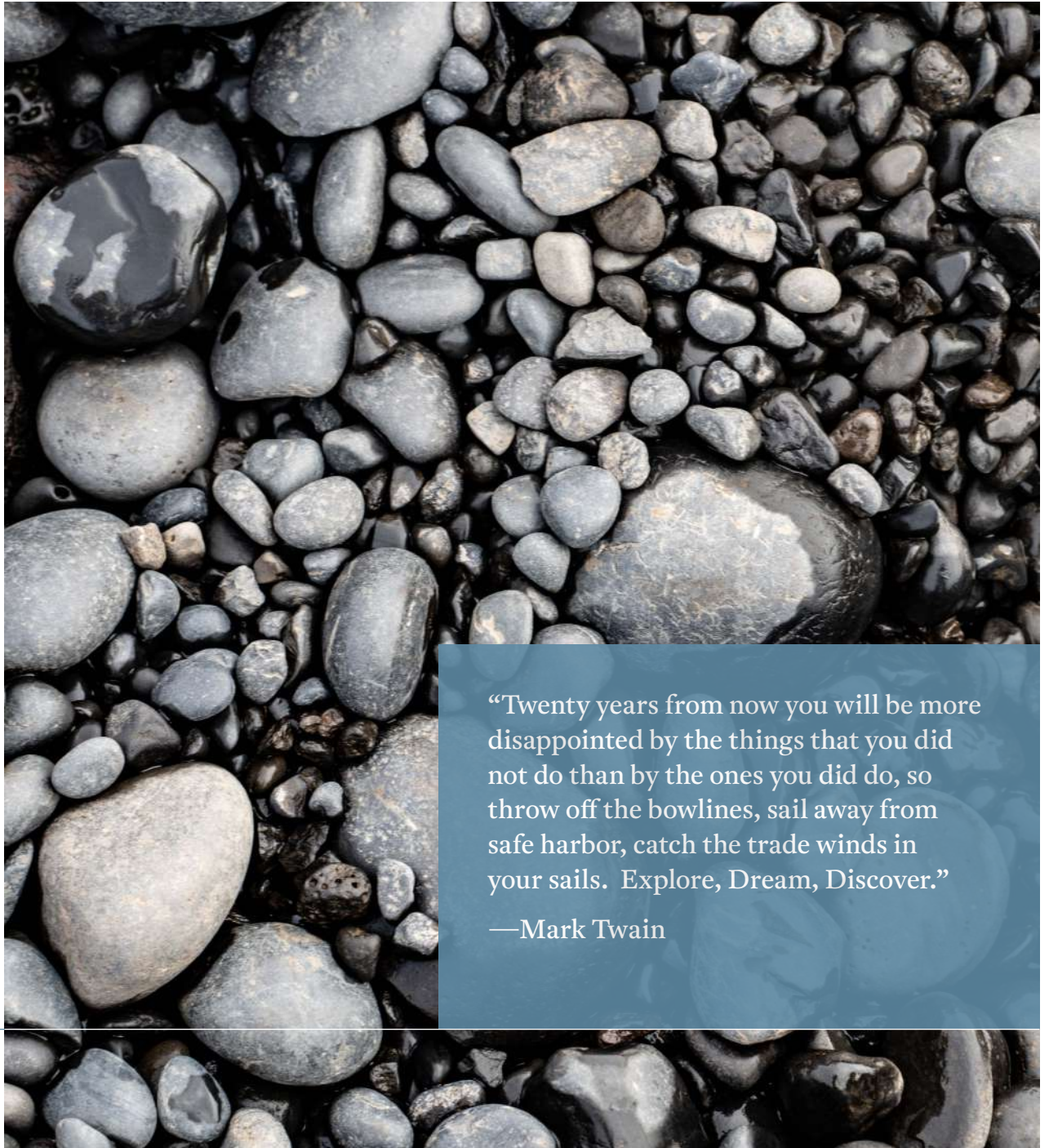




Iceland, Jan Mayen, Svalbard

Aboard *Syvlia Earle* | 31 May – 11 June 2024





“Twenty years from now you will be more disappointed by the things that you did not do than by the ones you did do, so throw off the bowlines, sail away from safe harbor, catch the trade winds in your sails. Explore, Dream, Discover.”

—Mark Twain

Iceland, Jan Mayen, Svalbard

31 May – 11 June 2024

Reykjavík

DAY 1 | Friday 31 May 2024

Latitude: 64°14.7'N
Longitude: 022°04.6'W
Course: 309°
Speed: 5.1 knots

Wind Speed: 4 knots SW
Barometer: 1011 hPa
Air Temp: 11°C

Today, we set out from Reykjavík aboard buses on the classic Icelandic Golden Circle tour. Our initial stop was the famous 'great geyser', the first geyser to be described in a printed source and the first known to modern Europeans. In days gone by, the blast of water from this geyser was known to reach 70 metres into the air. Many of us proceeded to survey some of the other thermal pools, before scurrying back to enjoy some retail therapy. The size and range of stock in the gift shop was impressive.

The next stop, just a short distance up the road, was the Gullfoss waterfall, where we looked over the magnificent thundering falls. Others hiked down to the lower viewing spot for a more intimate

perspective of this natural wonder. The final stop was Þingvellir National Park, the site of the 7-kilometre long rift where the North American Plate and the European Plate are moving apart at a rate of 2 centimetres per year. It is also the site of the world's first parliament or assembly at Þingvellir. A boardwalk trail took us to a 13-metre-high waterfall, Öxarárfoss, then we traversed the rift between the black columnar basalt walls.

We then proceeded to the magnificent *Sylvia Earle*, where we were introduced to our Expedition Leader and Expedition Team, and set sail before enjoying a lovely dinner together in the Gentoo Restaurant.

Snæfellsnes Peninsula

DAY 2 | Saturday 1 June 2024

Latitude:
64°38'4"N
Longitude:
023°13.7'W

Course:
316°
Speed:
4.8 knots

Wind Speed:
5 knots SW
Barometer:
1009 hPa

Air Temp:
8°C

Our first day in Iceland! Arnarstapi, a small fishing village on the Snæfellsnes Peninsula, with a population of only about 60 people, was the backdrop for our morning view.

One group hiked along the sea cliffs from the landing site, with views out to the walls of basalt columns, arches and the gorgeous patterns eroded by the ocean waves.

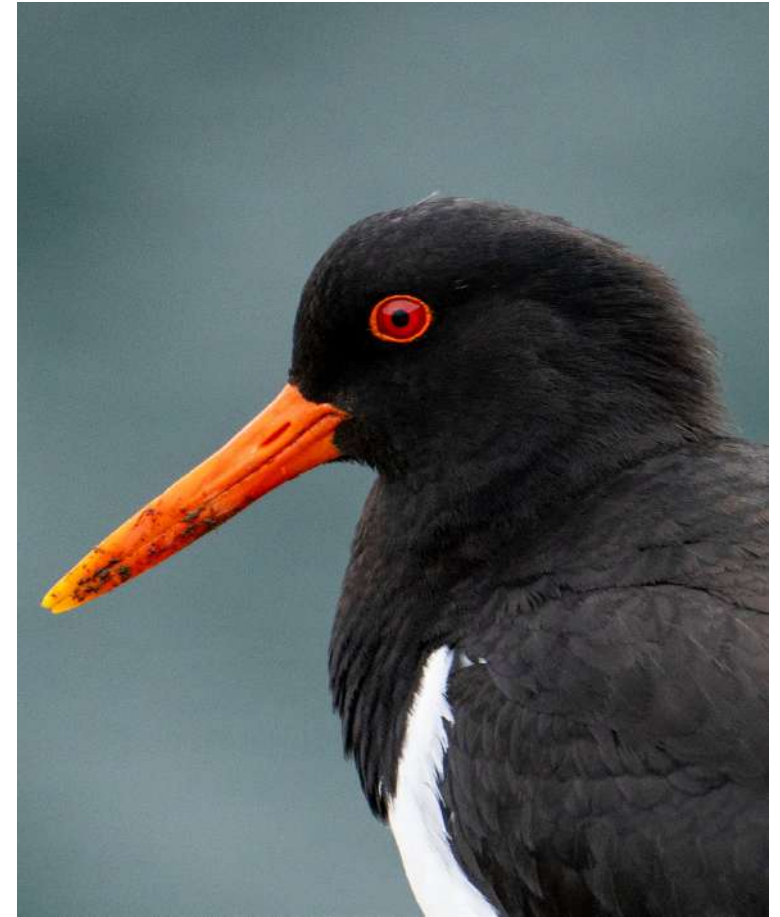
Another group took the bus to Lóndrangar basalt cliffs, which resemble a huge rock castle, and hiked across to the lighthouse and a dramatic beach filled with lava rocks eroded by centuries of ocean waves.

One group continued on to Eldborg crater, a deep rift that occurred between 5000 and 6000 years ago.

Both groups stopped by the iconic Kirkjufellsfoss or 'Church mountain waterfall', to snap some photos and revel in this gorgeous and flowing series of waterfalls. Back onto the buses and towards Grundarfjörður, another lovely fishing village, this time with a population of 900.

Once back on board the lovely *Sylvia Earle*, we were welcomed with hot chocolate and Frangelico.







Patreksfjörður & Arnarfjörður

DAY 3 | Sunday 2 June 2024

Latitude:
65°36.9'N
Longitude:
024°04.8'W

Course:
138°
Speed:
5 knots

Wind Speed:
18 knots W
Barometer:
1001 hPa

Air Temp:
7°C

Surrounded by steep majestic cliffs, incredible birdlife and unspoiled nature, Patreksfjörður is the westernmost town in Europe and the second-largest town in the Westfjords.

Our local guides, Didi and Siggj, led the way as we began our long walk along the cliffs. The paths were narrow, with drops so steep that they made your stomach lurch if you looked down for too long.

We first spotted puffins, their colourful beaks standing out against the grey rocks. A little farther along, we saw razorbills with their sleek, black-and-white bodies. The air was filled with the cries of kittiwakes and fulmars, their wings slicing through the air with effortless grace.

We visited the local museum, which housed an intriguing collection of artefacts, including US forces airplanes from World War II and two massive taxidermic polar bears. The bears stood on their hind legs, frozen in time, their glassy eyes watching over the exhibits.

The air was cool and crisp, with the wind still howling as we boarded our ship for our final adventure of the day: a whale-watching cruise. We didn't have to wait long before the first humpback whale was spotted. The immense size of this creature was humbling; it moved with a grace that seemed impossible for something so large. We watched in silent wonder as the whale surfaced and dived.





Pingeyri

DAY 4 | Monday 3 June 2024

Latitude:
65°56.8'N
Longitude:
023°45.7'W

Course:
307°
Speed:
8 knots

Wind Speed:
10 knots NNW
Barometer:
1011 hPa

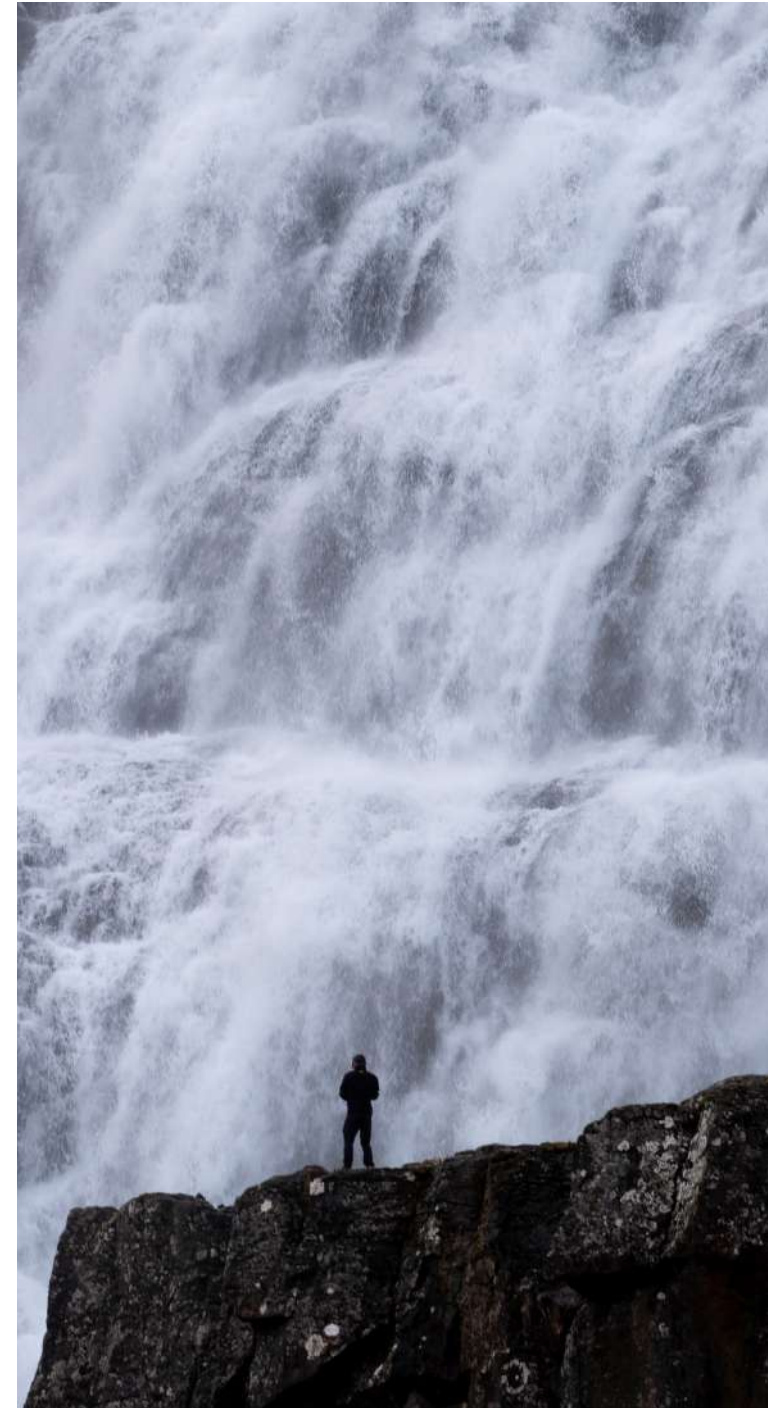
Air Temp:
7°C

We woke up in a beautiful fjord called Dýrafjörður, just in front of the cosy little village of Pingeyri – one of the oldest settlements in the Westfjords of Iceland.

The first place we visited was located in town, and it was the place where everybody could get a sense of a true ancient Viking experience! There was a short lecture about traditional ways of living in Iceland, costumes, and masterclass on baking traditional flatbread. Then everyone had a chance to dress like a Viking and feel themselves like true dwellers of the north.

The second place scheduled for the morning was Dynjandi waterfall. Located in Arnarfjörður, and at a height of 100 metres, Dynjandi is the tallest waterfall in the Westfjords. There are many legends about this waterfall. One of them says that a supernatural being called 'The Thunderer' once lived in it; the other says that Dynjandi is the literal bridal veil of a giantess who was jilted, and the booming sounds are the cries of her heartbreak.





At Sea & Northward to Jan Mayen

DAY 5 | Tuesday 4 June 2024

Latitude:
68°09.1'N
Longitude:
021°03.2'W

Course:
030°
Speed:
5.5 knots

Wind Speed:
45 knots N
Barometer:
1009 hPa

Air Temp:
2°C

It was a foggy and cloudy morning with a steady strong swell, which kept the bow dipping steadily as the *Sylvia Earle* effortlessly sailed along through the rough conditions. Due to the strong winds and swell, no-one could be on deck, but from the inside of the observation lounge on deck eight, we watched the spectacle of fulmars gliding and swirling in the sky, while we kept a watchful eye for any sea ice in the area.

At 10:30am Snowy gave his wonderful presentation on seabirds of the Arctic, covering all aspects of the subject from identification to the many varied species like Atlantic puffins, razorbills, guillemots,

northern fulmars and greater black-backed gulls, to name a few.

In the latter part of the afternoon, we had good views from the port-side observation lounge of the sea ice coming from Greenland, with the northern fulmars still steadily gliding with ease alongside the ship.

At 4.00pm Kelsey gave her interesting lecture on Jan Mayen, giving us a better understanding of the island dominated by the Beerenberg volcano, which stands at an impressive 2,277 metres, is the world's northernmost volcano above sea level, and Norway's only active volcano.



At Sea & Jan Mayen

DAY 6 | Wednesday 5 June 2024

Latitude:
69°34.6' N
Longitude:
012°55.2' W

Course:
050°
Speed:
11.4 knots

Wind Speed:
40 knots NW
Barometer:
993 hPa

Air Temp:
2°C

Jan Mayen is part of the Kingdom of Norway. It is approximately 56 kilometres long and 14 kilometres across at its widest point, with an area of 373 square kilometres. Its peak formed from a submarine volcanic ridge named Beerenberg volcano, the last major eruption of which was in 1732. The remainder, Sør-Jan, the southern region, is low and hilly. There are no harbours. The island is bleak and desolate, and its climate is foggy and stormy. There is a little tundra, on which a few arctic foxes subsist.

The island was possibly first sighted in 1607 by Henry Hudson, who called it Hudson's Tutches. In 1614, a Dutch sea captain, Jan May,

claimed territorial rights to the island for his company and Holland. It was used in these early days as a whaling base, but by 1642, the whales in its surrounding waters had been hunted to near extinction. A Norwegian meteorological observatory and a radio station were built in 1921, and on 8 May 1929, Norway annexed Jan Mayen. During World War II, US armed forces maintained the weather station there. In 1958–1959, an airstrip, a radio and a navigation station were erected on the island by the the North Atlantic Treaty Organization (NATO) allies. Apart from the station personnel, the island is uninhabited.





At Sea & Northwards to Svalbard

DAY 7 | Thursday 6 June 2024

Latitude:
72°56.5' N
Longitude:
004°18.9' W

Wind Speed:
35 knots NE
Barometer:
1006 hPa

Course:
031°
Speed:
11.1 knots

Air Temp:
2°C

On the MV *Sylvia Earle* we sailed,
Through the Greenland Sea where the winds wailed.
Heather taught us with flair, of polar bears and their care,
In rough weather, we courageously prevailed.

With a start, the waves rose up high,
As fulmars circled the turbulent sky.
Heather's tales did unfold,
Of cubs in the cold,
While the ship rode the waves, oh my!

Polar bear life from birth to the end,
Heather's knowledge she did extend.
From the ice they did roam,
Finding seal for their home,
Their survival a tale to comprehend.

Big waves crashed and sprayed the deck,
Yet our spirits they did not check.
We dreamed of Jan Mayen,
As the ship kept swayin',
In awe of the Arctic's raw spec.

As night fell, our courage held tight,
In the lounge, we found delight.
With popcorn in hand,
A movie so grand,
Eurovision's Fire Saga was our night.

Laughter echoed through the ship's hall,
As we watched, our worries grew small.
The rough sea outside,
We took in stride,
For adventure had captured us all.

From sunrise to the fall of the night,
Through the Greenland Sea's fierce might,
We learned and we dreamed,
As the arctic moon beamed,
In the MV *Sylvia Earle's* brave flight.

With Howard's guidance, we gained,
A deep respect for the wild's domain.
Through each fulmar's cry,
And each wave's high,
Our love for the Arctic was sustained.

So here's to a day in rough weather,
On the MV *Sylvia Earle* together.
From polar bear lore,
To waves that did roar,
And a night filled with laughter's sweet tether.

A journey both wild and serene,
In the Greenland Sea's mighty sheen.
With knowledge and dreams,
And movie-lit beams,
Our Arctic adventure was keen.



Hornsund

DAY 8 | Sunday 7 June 2024

Latitude:
76°45.5'N
Longitude:
004°00.6'E

Course:
031°
Speed:
13.1 knots

Wind Speed:
18 knots NE
Barometer:
1019 hPa

Air Temp:
6°C

As the morning unfolded, the last of the storm rolled over the ship. Wave motion was noticeably lighter as we gathered in the lecture theatre to listen to Kelsey's wonderful historical tales of the history of Svalbard. She recounted stories of early explorers, discoveries and the enduring allure of this arctic archipelago.

Later in the day, we learned from Heather about the charismatic arctic fox, a resilient and adaptable creature that thrives in the harshest of conditions. Undeniably cute, these feisty foxes are emblems of the north.

By the afternoon, the storm began to abate. Relief was palpable as the announcement came over the intercom: the ship gym and sauna

were reopening, and we could once again venture onto the outside decks. The return of these amenities was met with much enthusiasm, and many of us relished the opportunity to stretch our legs.

Elle led our first Citizen Science Cloud Survey, inviting us to observe and record the cloud formations as part of a global scientific effort. Elle's dedication to science and her ability to engage everyone in meaningful activity underscored the collective spirit of the voyage.

The day ended with a collective sense of achievement. Despite the storm's fury, we had persevered, learned, and even found joy. As we gazed out at the now calm sea, the peaks of Spitsbergen appeared on the horizon.

Gnålodden & Samarinbreen

DAY 9 | Saturday 8 June 2024

Latitude:
76°59.3'N
Longitude:
015°45.9'E

Wind Speed:
20 knots E
Barometer:
1021 hPa

Course:
080°
Speed:
7.2 knots

Air Temp:
3°C

In Hornsund, dramatic scenery was everywhere: snowbound mountain ranges framed with wispy slivers of cloud; great clouds of kittiwakes and guillemots taking to the wing; gigantic limestone cliffs appearing almost too sheer to be real.

Our first outing was a landing, the first anyone had made since Iceland. The swell was deceptively challenging and everyone had to remain focussed to first get into the Zodiacs, then navigate and disembark safely on the wild shore.

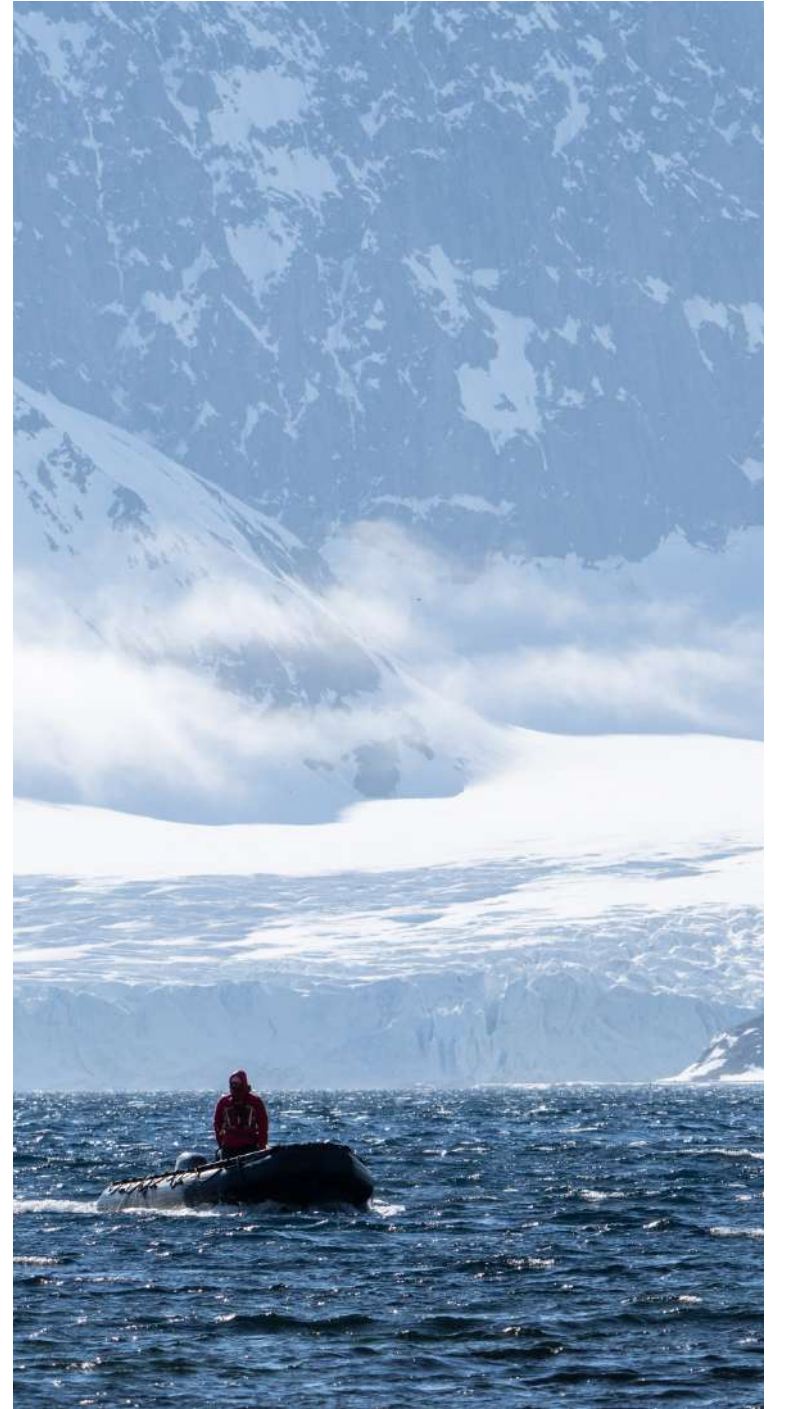
The legendary hunter and outdoorswoman, Wanny Woldstad, used to live here – an old hut of hers still stands – and do her deadly work. Our scouts were on the lookout for polar bears, to protect both

themselves and the passengers. In the 1930s, Woldstad also looked for polar bears, but with a very different eye. By the time she finally left this frozen outpost, she'd killed 77.

We had a couple of hours in the cold morning sun to explore the beach, but those who arrived early were quickly visited by an arctic fox. Later, keen eyes also spotted a lone walrus on the beach.

In the afternoon, a sleek, fast-moving minke whale was spotted. Later during our outing, it was followed by a couple of humpback whales, which casually patrolled the edge of an enormous sheet of impressive fast ice.







Recherchefjorden & Bamsebu

DAY 10 | Tuesday 9 June 2024

Latitude:
77°34.6' N
Longitude:
024°36.6' E

Course:
125°
Speed:
7.2 knots

Wind Speed:
18 knots NE
Barometer:
1015 hPa

Air Temp:
4°C

The day began with the gentle hum of excitement as Expeditioners gathered for a Zodiac exploration in Recherchefjorden, where majestic walrus basked in the arctic sunlight.

Next, we ventured towards a beautiful glacier lagoon at the glacier tongue of Recherchebreen.

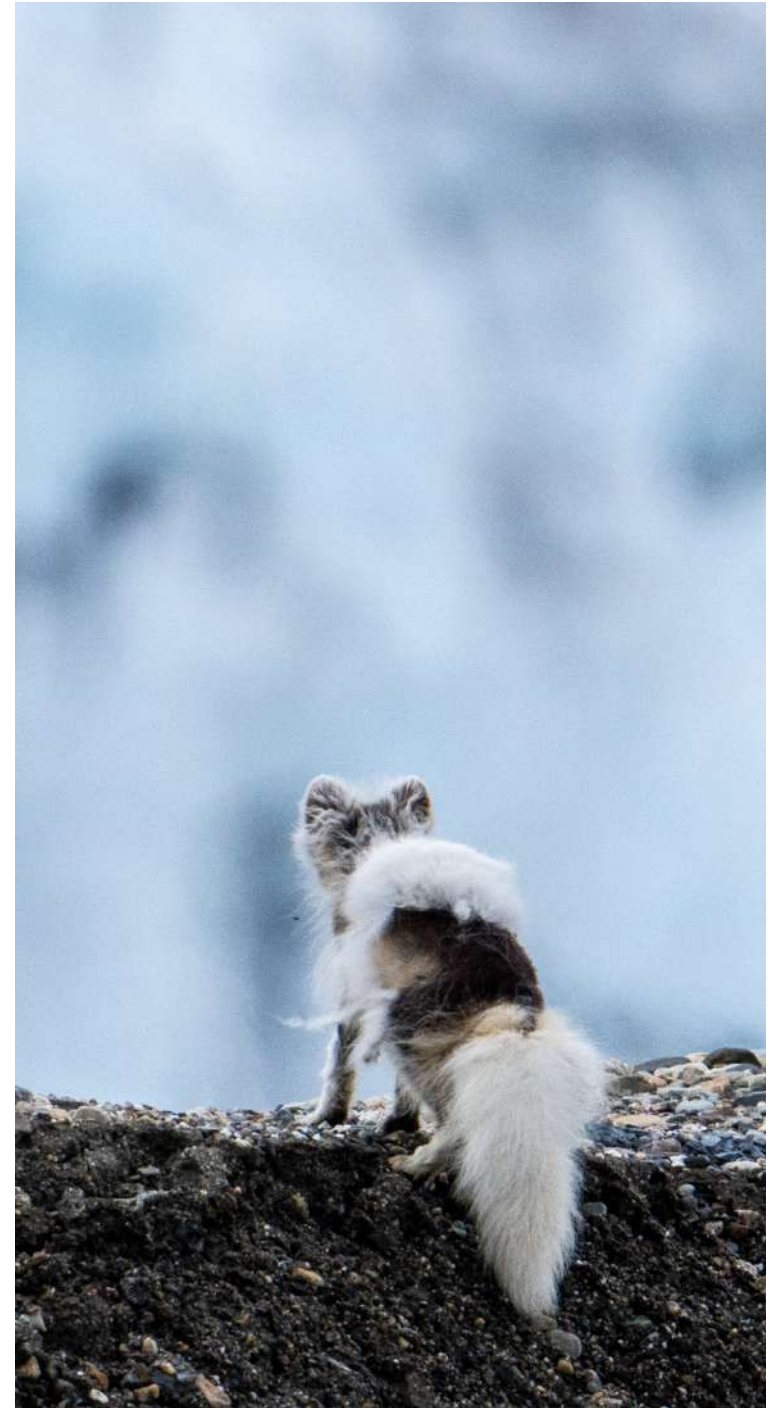
After lunch on board, some of the Expeditioners set off for a long hike around Bamsebu, while others explored the landing site, revelling in the stunning fjord and mountain views.

Together we explored an old whaling hut steeped in history, and a beach scattered with the bones of beluga whales – both poignant reminders of Svalbard's past.

As the day progressed, it was time for the few brave enough to do so, to take the plunge – the polar plunge, that is. With hearts pounding and adrenaline coursing through their veins, 14 brave souls (plus a few Expedition Team members and crew) leapt from the back of the ship into the icy waters of the Arctic Ocean, feeling invigorated and alive in the face of nature's raw power.

To cap off the day's adventures, a sumptuous BBQ awaited on deck seven of the *Sylvia Earle*, with Expeditioners and guides alike eagerly scanning the horizon for a glimpse of the polar bears that have eluded us so far throughout our explorations around Svalbard.







St. Jonsfjorden & Prins Karls Forland

DAY 11 | Monday 10 June 2024

Latitude:
78°30.6'N
Longitude:
012°37.7'E

Wind Speed:
1 knot NW
Barometer:
1017 hPa

Course:
086°
Speed:
9.9 knots

Air Temp:
6°C

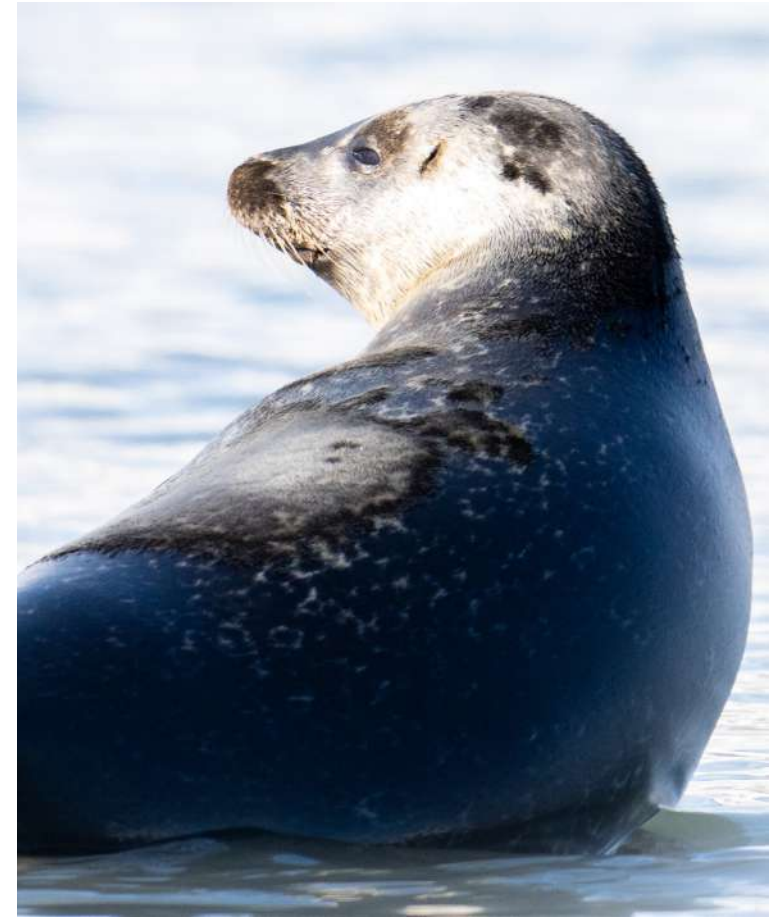
Today marked the final full day of our expedition. We launched our Zodiacs into the fjord's tranquil waters, framed by imposing cliffs and glittering icefields.

The fjord was a canvas of rugged beauty, each rock and ice floe telling the story of millennia. Our morning voyage was punctuated by sightings of kittiwakes and arctic terns swooping over the sea ice, and several ringed seals swimming in the calm water.

In the afternoon, we steered our course towards the east side of Prins Karls Forland – the narrow strip of mountains and glaciers on the west side of Spitsbergen. We spent time in the sun up on deck eight, peering through binoculars and scouting for polar bears.

Later on, we gathered for the Captain's Farewell Dinner. The camaraderie among the crew and fellow Explorers was palpable, as we shared stories and reflections over yet another lovely meal. We have seen so much over the past couple of weeks, and shared many experiences together.

Our day concluded with a photography slideshow, a visual chronicle of our travels from Iceland to Jan Mayen to Svalbard (and all of the wavy days in between). Each image on the screen brought back vivid memories of volcanic landscapes, desolate shores and the boundless icefields. It was a fitting tribute to the diverse and awe-inspiring environments we had traversed.



Longyearbyen

DAY 12 | Tuesday 11 June 2024

Latitude:
78°13.89' N
Longitude:
015°37.40' E

Wind Speed:
8 knots NW
Barometer:
1008 hPa

Course:
At Anchor
Speed:
At Anchor

Air Temp:
8°C

Here we are at the end of our adventure! Thank you for joining us on this magnificent journey, and we hope to see you again on the high seas some day.





Kayaking Log

with Kayak Guides: Ivan Klochkov, Alex Chavanne

3 June 2024, AM – Þingeyri
6 km

After a sunny wake-up in the Dýrafjörður fjord around Þingeyri, we were excited for our first paddle tour of this trip! We started with a small Zodiac drive to the other side of the fjord, where we could launch in calm waters. After the necessary safety briefing on the water, we finally had our first kayak kilometres in a real Icelandic fjord. Learning about the local seaweed, encountering two seals, and watching plenty of birds flying around us, we enjoyed a beautiful first morning out in our kayaks.

8 June 2024, PM – Samarinbreen,
Svalbard 6 km

It was our first paddling session in Svalbard, and it was truly amazing! Samarinbreen fjord was full of pack ice and the ship was positioned right next to its edge. We made a short paddle along the ice and then landed straight on it! We spent some time on the ice chatting to our Expedition Leader, Howard, and Firearms Manager Mario, and then heard a message that a couple of humpbacks had been spotted in the bay! So we got into our Zodiac and got a bit closer to check them out. Whales were cruising along the coastline, so we decided to get into our kayaks to continue paddling, and ended up going parallel to the whales, observing them almost till the end of our outing. What a wonderful first paddle in the Arctic!



Number of
Kayakers: 7

Total Paddle
Outings: 4

Total Distance
Paddled: 21.6 km

Kayakers:

Michael Bucher

Heatherly Bucher

Peter Douglass Briggs

Victoria Dixon

Peter Vanderhorst

Dawn Vanderhorst

Hilary Hale

9 June 2024, PM – Recherchefjorden,
Svalbard 3.6 km

Watching a huddle of walrus as we ate our breakfast, made us excited for what the coming day would bring. After a short, walrus sightseeing tour by Zodiac, we launched our kayaks outside of the lagoon in the last part of Recherchefjorden.

All alone in the fjord, with the Zodiacs inside the lagoon, we enjoyed some peace and quiet and no talking, which allowed 'Zen' paddling. Once we arrived at the entrance of the lagoon, we kayaked against the wind to the sea ice, which was in front of the glacier. Following the sea ice, we found a lead in the ice, which became the perfect spot for our group photo. It was an interesting experience to see how the current/river streamed beneath the ice, through the lead coming from the glacier. We paddled along the sea ice and made our way out of the lagoon. Paddling with the wind in our backs but the tides against us, gave us a tiny impression of what a real tide race would look like. What a beautiful morning out in wild Svalbard!

10 June 2024, AM – St. Jonsfjorden,
Svalbard 6 km

The weather conditions were just amazing that morning! The ship was halfway into a beautiful fjord covered with fast ice, the sun was shining bright and the surface of the water was just like glass! We got into our kayaks straight from the marina and paddled towards the northern wall of the fjord to explore its coastline. We spotted many playful and curious seals hanging out on shallow rocks and swimming in the water, and then paddled into the fast ice where we had a little 'Zen moment' to absorb the beauty of the surroundings. Then we headed to the west, towards the exit from the fjord, observing many reindeer on the way. It was so good to paddle in glass-calm water and to enjoy the sunshine! Once we went far enough, we hopped back to the Zodiac and returned to the ship. What a great way to finish the trip!





Bird Sightings

Bird Species	May – June											
	31	1	2	3	4	5	6	7	8	9	10	11
Red-throated Diver								•				
Great Northern Diver				•	•		•					
Northern Fulmar	•	•	•	•	•	•	•	•	•			
Northern Gannet	•		•			•		•	•			
Pink Footed Goose				•			•					
Greylag Goose							•	•				
Whooper Swan				•	•		•					
Mallard		•	•	•			•					
Tufted Duck		•		•		•	•					
Common Eider		•		•	•	•	•	•	•			
Harlequin Duck		•		•			•	•				
Long-tailed Duck							•					
Eurasian Wigeon						•	•					
Common Goldeneye		•										
Barrow's Goldeneye							•					
Slavonian Grebe							•					
Rock Ptarmigan					•							
Common Ringed Plover						•						
European Golden Plover		•			•	•						

Bird Species	May – June											
	31	1	2	3	4	5	6	7	8	9	10	11
Dunlin		•				•						
Purple Sandpiper		•				•		•				
Ruddy Turnstone		•		•								
Common Snipe		•		•	•	•	•		•			
Red-necked Phalarope		•				•						
Common Redshank		•		•	•	•		•				
Eurasian Oystercatcher		•		•				•	•			
Whimbrel		•						•				
Black-tailed Godwit								•				
Arctic Skua		•						•	•			
Great Skua						•			•			
Glaucous Gull				•		•			•	•		
Great Black-backed Gull		•		•								
Lesser Black-backed Gull												•
Black-headed Gull		•		•	•		•	•			•	
Iceland Gull	•	•		•			•	•			•	
Black-legged Kittiwake	•	•	•			•		•	•			
Arctic Tern		•	•	•	•	•	•	•	•			
Common Guillemot		•	•	•	•	•	•					

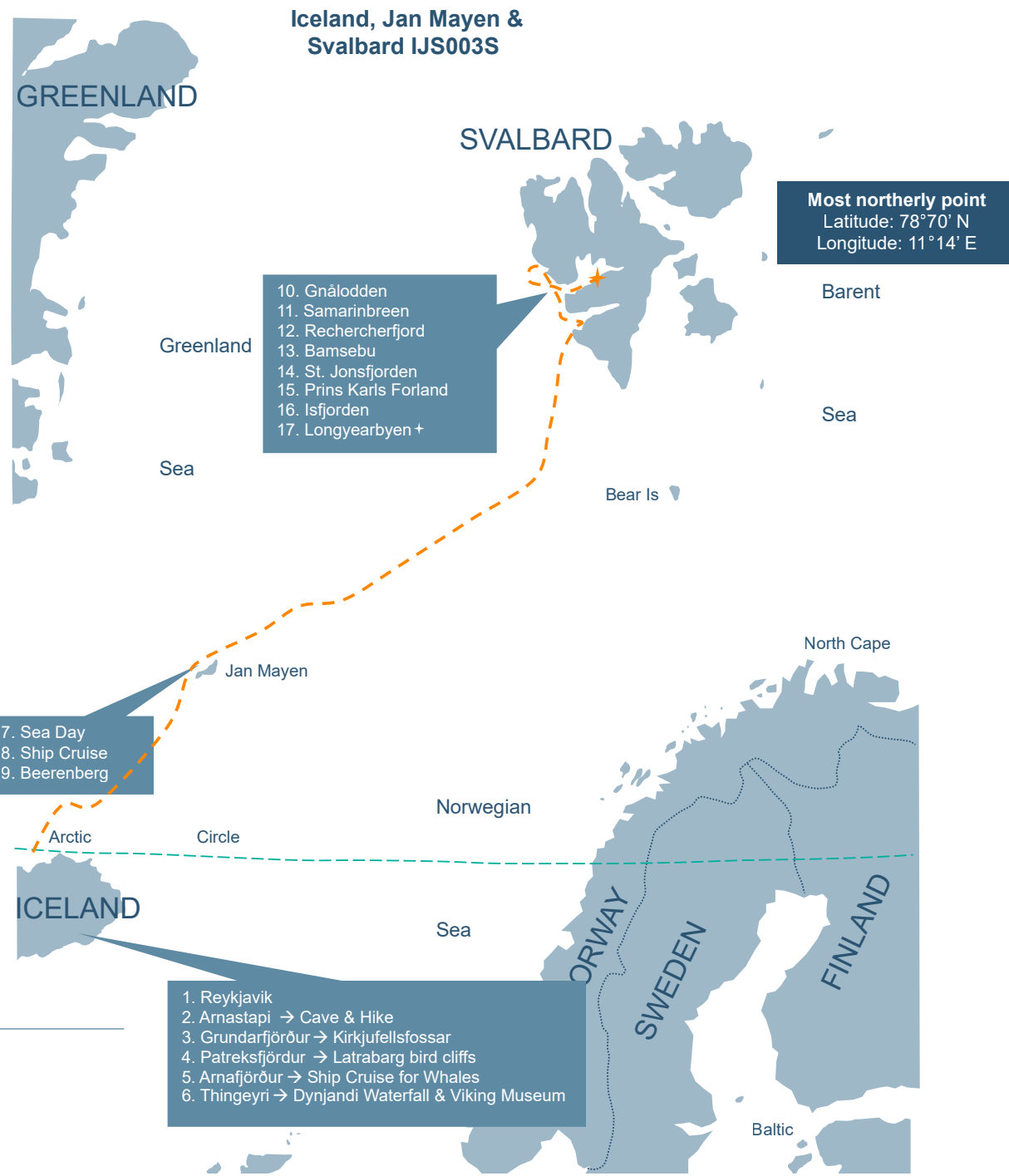
Bird Sightings

Bird Species	May – June											
	31	1	2	3	4	5	6	7	8	9	10	11
Brünnich's Guillemot						•						
Black Guillemot		•		•	•	•	•		•			
Razorbill		•				•						
Atlantic Puffin	•					•			•			
European Shag		•			•							
Great Cormorant		•										
Rock Pigeon								•	•	•		
Meadow Pipit		•		•	•		•					
European Starling				•					•	•		
Eurasian Blackbird					•							
Common Raven		•		•			•	•				
White Wagtail		•		•	•	•	•	•				
Snow Bunting					•			•	•			

Mammal Sightings

Mammal Species	May – June											
	31	1	2	3	4	5	6	7	8	9	10	11
Common/Harbour Seal				•								
Fin Whale					•							
Minke Whale					•							
Humpback Whale							•					
Arctic Fox		•										
Reindeer								•				

Map



Iceland, Jan Mayen, Svalbard
31 May – 11 June 2024



Our Expeditioners

Karen Alaniz

Maricela Alaniz

Carolyn Alexander

Gheetha Ammasee

Christopher Barrie

Maxine Barrie

Phillipa Bourke

Alan Bowes

Peter Briggs

Michael Bucher

Heatherly Bucher

Janatha Burns

Peter Cvek

Mary Ellen Cvek

Victoria Dixon

Margaret Evetts

Hilary Hale

Robert Hill

Matthew Horspool

Zoey Husband

Jeffrey Javelet

Jane Johnston

Kim Knight

Mary Kormendy

John Kormendy

Michael Lewis

Kathryn MacKay

Margaret Mackie

James Mc Intosh

Terese McCowen

Judith McGarry

Robert Mitchell

Anbarasi Muthusamy

Diane Neve

Kay Nilsson

Patricia Owen

Celia Pepper

Barbara Phillips

Shanmuga Rathakrishnan

Dorothy Renshaw

Joshuan Rivera Jimenez

John Sherman

Rheta Sherman

Angeliki Siapkara

Patricia Spiekermann

Samantha Stevens

Nannette Tehan

Purushothaman V Ratha Krishnan

Peter Vanderhorst

Dawn Vanderhorst

Jocelyn Veldhuyzen

Reinhard Veldhuyzen

John Walker

Glenda Walker

Patricia Waters

Ian Waters

Maria Watson

Joyce Winning Croft

Hans Zandbergen

Expedition Team

Expedition Leader: Howard Whelan

Assistant Expedition Leader: Leo Soibelzon

Onboard Expedition Manager: Samantha Deer

Onboard Expedition Assistant: Reza Rusooly

Photography Guide: Jamie Lafferty

Photography Guide Trainee: Fiona Wardle

Geologist / Glaciologist: Heather Chrystie

Expedition Guide: Elena Wimberger

Marine Biologist/Citizen Science Coordinator: Elle Boone

Naturalist: Graeme Snow

Medic: Scott Thompson

Zodiac Manager: Sergei Andronov

Historian: Kelseyamacho

Lead Kayak Guide: Ivan Klochkov

Senior Kayak Guide: Tim Vanhoutteghem

Senior Officers & Heads of Department

Master: Jorge Ferdinez

Chief Officer: Sergio Saldanha Hernandez

Third Officer: Bryan Salem

Deck Cadet: Vladislav Klaptenko

Safety Officer: Andrus Pruul

Bosun: Leo Francis Magnaye Marzan

Ship Doctor: Gloria Gonzalez

Chief Engineer: Srdan Verzosa

1st Engineer: Warlito Verzosa

IT Officer: Rene Reyes

Hotel Director: Balvant Singh

F&B Service Manager: Narendra Seeram

Head Bartender: Juan Carlos Gonzalez

Chief Purser: Jonalyn Galve

Executive Chef: Rosauro Soriano

Sous Chef: Alexander Mungcal

Hotel Controller: Alfredo Jr. Laquian

Receptionist: Kutsi Vazquez

Receptionist: Angeli Perona

Head Stateroom Attendant : Balvant Singh

Able Seaman: Rosendo Cruz

Able Seaman: Rajiv Mahadan

Able Seaman: Anthony Brosas

Able Seaman: Ferdy Reugia

Able Seaman: Rossell Fernandez Araujo

Able Seaman: Eduardo Aloyan

Photography thanks to:

Jamie Lafferty

Ivan Klochkov


Tim Vanhoutteghem

Elle Boone





 facebook.com/auroraex

 @aurora_expeditions

 youtube.com/auroraexpeditions

 [Aurora Expeditions
\(@Polar_Experts\) / Twitter](https://Aurora Expeditions (@Polar_Experts) / Twitter)