

# Northwest Passage

Aboard *Sylvia Earle* | 21 July – 4 August 2024





# Northwest Passage

21 July – 4 August 2024

# Kangerlussuaq

DAY 1 | Sunday 21 July 2024

Latitude:  
64°09.54' N  
Longitude:  
021°56.0' W

Course:  
198°  
Speed:  
Alongside

Wind Speed:  
WWN 11 knots  
Barometer:  
1008 hPa

Air Temp:  
18°C

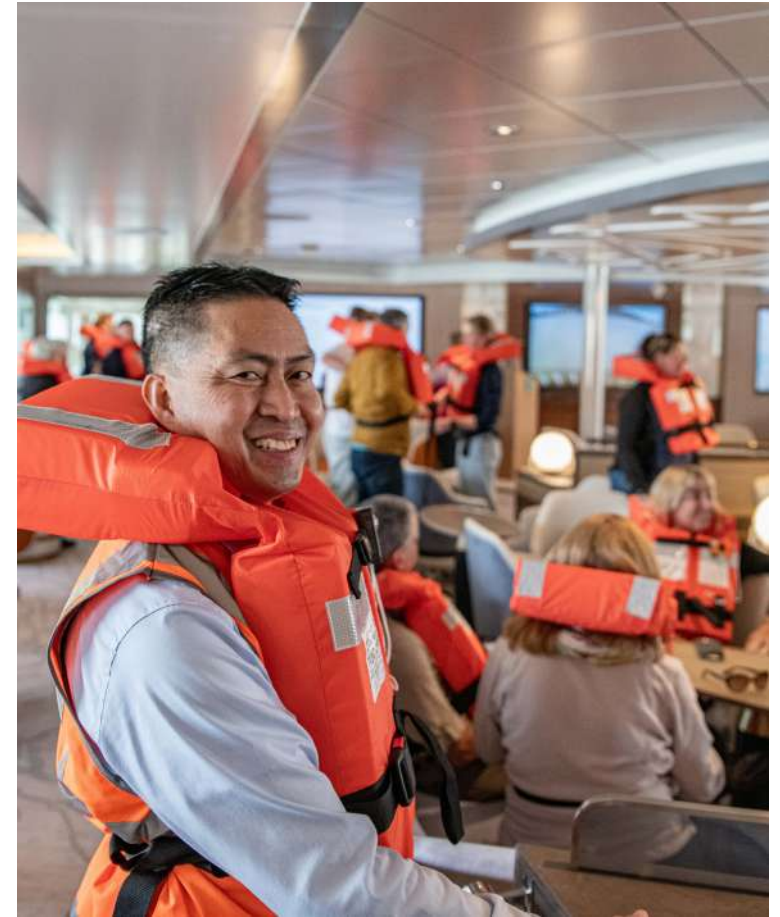
Today we arrived at the sunniest settlement in Greenland. Kangerlussuaq, which serves as the gateway to the Greenland ice cap. The majority of Kangerlussuaq residents work in the tourism industry or at the airport. It is a region with many unique and beautiful places to discover.

After getting off of our flight, we came alongside with the Zodiacs and boarded the beautiful vessel via the mudroom, where the Aurora Expeditions team and the ship's crew welcomed us and showed us to our cabins. Then it was time to explore our new home-away-from-home, the *Sylvia Earle*.

We had time to unpack, settle into cabins and enjoy delicious embarkation refreshments before our Expedition Leader Alex called us together to welcome us aboard the *Sylvia Earle*.

During our meal, we admired the stunning landscape of the Kangerlussuaq Fjord. The small community of Kangerlussuaq gradually receded as we made our way past rocky slopes that were absolutely stunning in the steely light. The fjord is 190 kilometres long and between 1.5 and 8 kilometres wide, flowing from the estuary of Qinguata Kuussua river to the southwest, eventually emptying into the Davis Strait. It is the longest fjord of western Greenland.





# Sisimiut & Ukiivik

DAY 2 | Monday 22 July 2024

Latitude:  
66°56.362'N  
Longitude:  
053°44.517'W

Course:  
063.2°  
Speed:  
12.3 knots

Wind Speed:  
8 knots W  
Barometer:  
1006 hPa

Air Temp:  
10°C

As we sailed towards our anchorage, a single fishing boat motored out of the harbour, marking the beginning of another working day in Sisimiut.

After a short shuttle ride we stepped out onto the pier to begin our morning. The town was just coming to life as we walked up the steep streets and encountered some local wildlife: the ferocious Greenlandic mosquitos and black flies.

After we were all back on board, *Sylvia Earle* sailed west again out into the Davis Strait. Fog came down quite suddenly and the blue skies

faded to grey.

By the time we reached our afternoon destination, the fog had lifted enough for us to operate the Zodiacs but not enough to allow for a safe landing.

Our first Zodiac cruise was the perfect introduction to Greenland as the waters remained calm and the muted scenery breathtaking. Eider ducks, black-backed gulls and the occasional black guillemot gave way as we motored through the shallow waters of Ukiivik.







# Ilulissat

DAY 3 | Tuesday 23 July 2024

Latitude:  
69°07.030' N  
Longitude:  
51°54.969' W

Course:  
063.2°  
Speed:  
12.3 knots

Wind Speed:  
23 knots SSE  
Barometer:  
1000 hPa

Air Temp:  
6°C

Our mission was to navigate through the ice and reach the picturesque town of Ilulissat, where a day of exciting experiences awaited us. In Ilulissat, we find a remote and beautiful town nestled on the edge of the Arctic Circle as well as the UNESCO World Heritage Site of the Ilulissat Icefjord.

As we ventured deeper into the icy expanse, the icebergs became more intricate and mesmerising. Shades of blue danced upon their surfaces, reflecting the ethereal beauty of the arctic landscape.

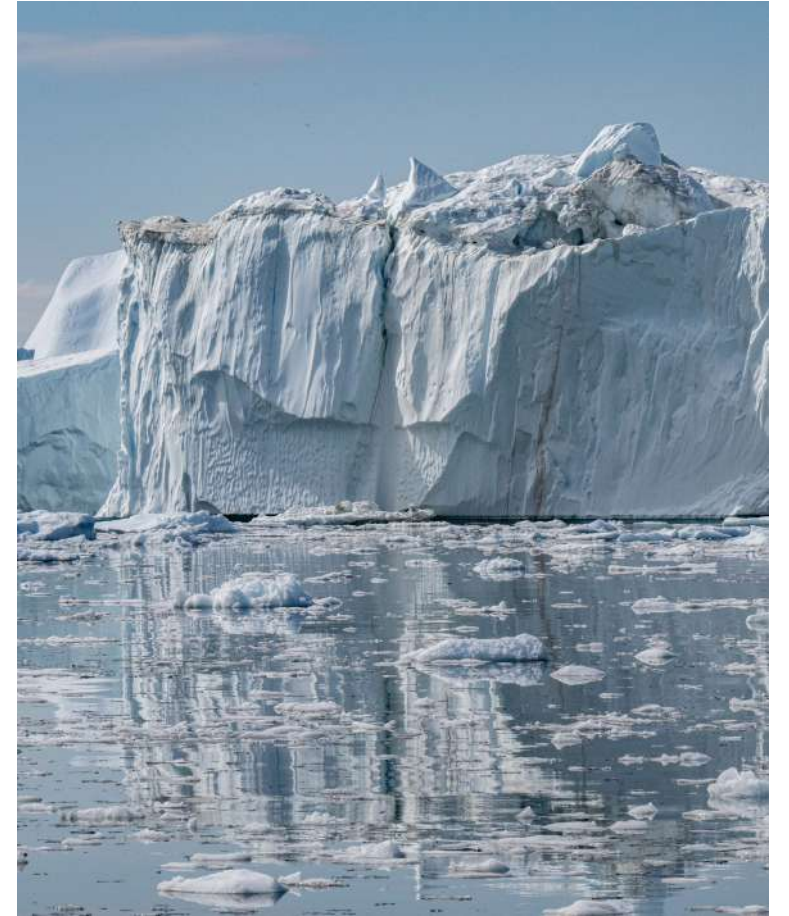
Meanwhile, many of us set out to explore the museum and boardwalk that led to the UNESCO World Heritage Site. The museum was a treasure trove of knowledge, showcasing the history, culture, and ecological significance of the region. The wooden pathway meandered through a pristine wilderness, offering panoramic views of the icebergs floating in the fjord, their icy shapes juxtaposed against the rugged cliffs that framed the landscape. It was a humbling experience to be surrounded by such natural wonders.













# Niaqornat | At Sea

DAY 4 | Wednesday 24 July 2024

Latitude:  
70°37.801'N  
Longitude:  
54°45.252'W

Wind Speed:  
26 kn S  
Barometer:  
997 hPa

Course:  
001.4°  
Speed:  
15.2 knots

Air Temp:  
7°C

Located on the Nuussuaq Peninsula with a view over Uummanaq Fjord, lies the small settlement of Niaqornat (population 35, 2020 Statistical Greenland). As we arrived via Zodiac, the residents of Niaqornat greeted us on the beach with abundant hospitality and a friendly welcome. They opened their community, giving an overview of the location, suggesting walking routes and making their school available for visitation. In addition, we were fortunate to have the opportunity to purchase from a beautiful display of locally made crafts of sealskin, knitted goods and beadwork.

The natural beauty offered a quiet stroll through the community of brightly coloured houses as well as the choice of several elevated walking trails – most notably, two routes with wooden staircases that led to outstanding viewpoints. We learned that these steps (steep in construction) served the functional purpose of 'tsunami stairs' - offering a safe location for residents should the need arise.

After several hours ashore, we headed back to the ship for a lovely lunch and continuation of our day at sea with various lectures and workshops.







# Upernavik | Singarnaq-Annertussoq

DAY 5 | Thursday 25 July 2024

Latitude:  
72°39.9'SN  
Longitude:  
56°13.6'W

Course:  
005°  
Speed:  
10.1 knots

Wind Speed:  
8 knots S  
Barometer:  
990 hPa

Air Temp:  
7°C

We planned to visit Upernavik, an island situated in West Greenland, which lies within the Upernavik Archipelago, a vast archipelago of small islands on the coast of northeastern Baffin Bay. The small town of Upernavik, meaning 'springtime place' in Kalaallisut (Greenlandic), was our next and last town/village visit along West Greenland.

There were plenty of options to explore in Upernavik; going for a long hike to get stunning views from the airport plateau, or heading to the museum to immerse into some cultural history, there was something for everyone.

The hours quickly passed, and it was time to head back to the ship

to enjoy lunch. Afterwards, an opportunity presented itself which we couldn't say no to: an afternoon remote landing!

Singarnaq-Annertussoq island – still within the Upernavik Archipelago, looked like an ideal location for an afternoon's adventure. So off we set with plans to land and check out the remote wilderness, our first remote landing! Our expert guides headed ashore first to make sure we avoided any too-close polar bear encounters. We were given the 'all clear' to head ashore and stretch the legs for an exciting walk. The kayakers were also out in full force, tucking in and out of the unique coastline and embracing their surroundings.









# At Sea | Red Head

DAY 6 | Friday 26 July 2024

Latitude:

74°19.5'N

Longitude:

58°40.1'W

Course:

354°

Speed:

11 knots

Wind Speed:

20 knots NW

Barometer:

982 hPa

Air Temp:

5°C

The day started with two fantastic lectures. Nina spoke about Northwest Passage expedition history and then Mariah taught us about place names in Inuktitut.

In the afternoon, we reached the place called Red Head. It's a group of islands in the far north of West Greenland and we knew nearly nothing about it when we first arrived. This place appeared on European maps in 1818, as it was visited by whalers, and it was known to John Ross during his expeditions as one of the northernmost points that whalers had reached at the time.

The weather for our afternoon was really calm and nice, so we deployed the Zodiacs. We cruised along the beautiful ancient granite formations, painted in different-coloured layers. Some of the rocks

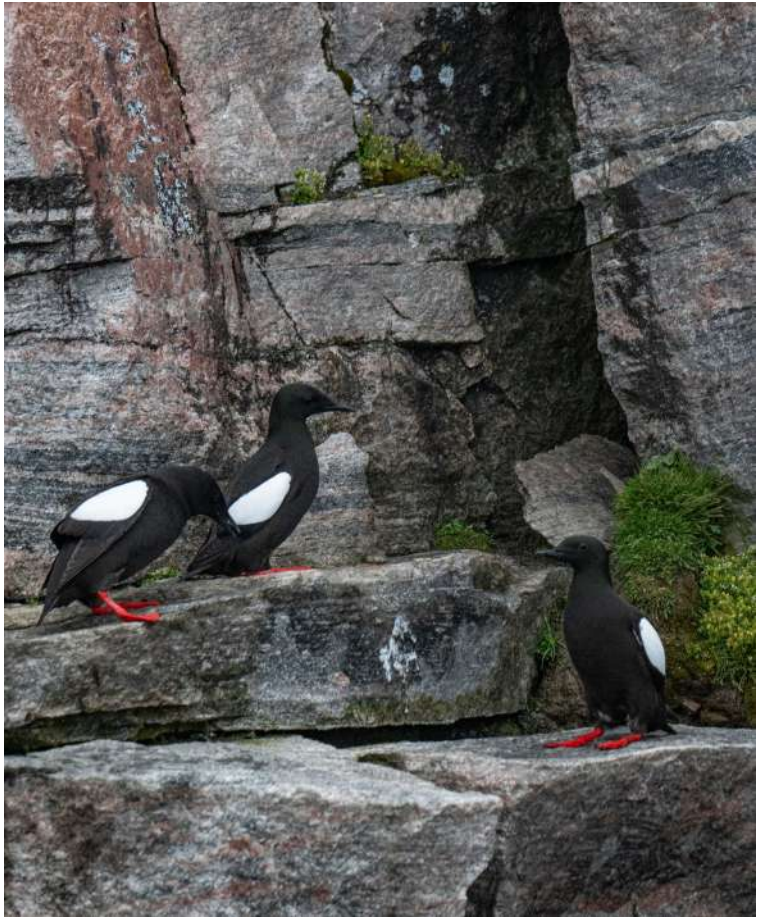
were very red in colour, so we understood where the name Red Head came from!

We entered narrow caves and enjoyed spending some time inside them, being surrounded by these sheer rocky walls. We cruised between the majestic icebergs that calved from the Greenland ice sheet, just around the corner from us. Some icebergs were surrounded by fog, which gave us great photographic opportunities.

Red Head appeared to have a really rich bird life. We found a nesting colony of black guillemots on the vertical rocky wall, several glaucous gulls with chicks, and really good numbers of common eider ducks as well as some king eiders! We were even lucky to observe a seal swimming in the water between the icebergs.







# At Sea

DAY 7 | Saturday 27 July 2024

Latitude:  
75°40.1'N  
Longitude:  
66°1.3'W

Course:  
257.7°  
Speed:  
9.2 knots

Wind Speed:  
11 knots E  
Barometer:  
996 hPa

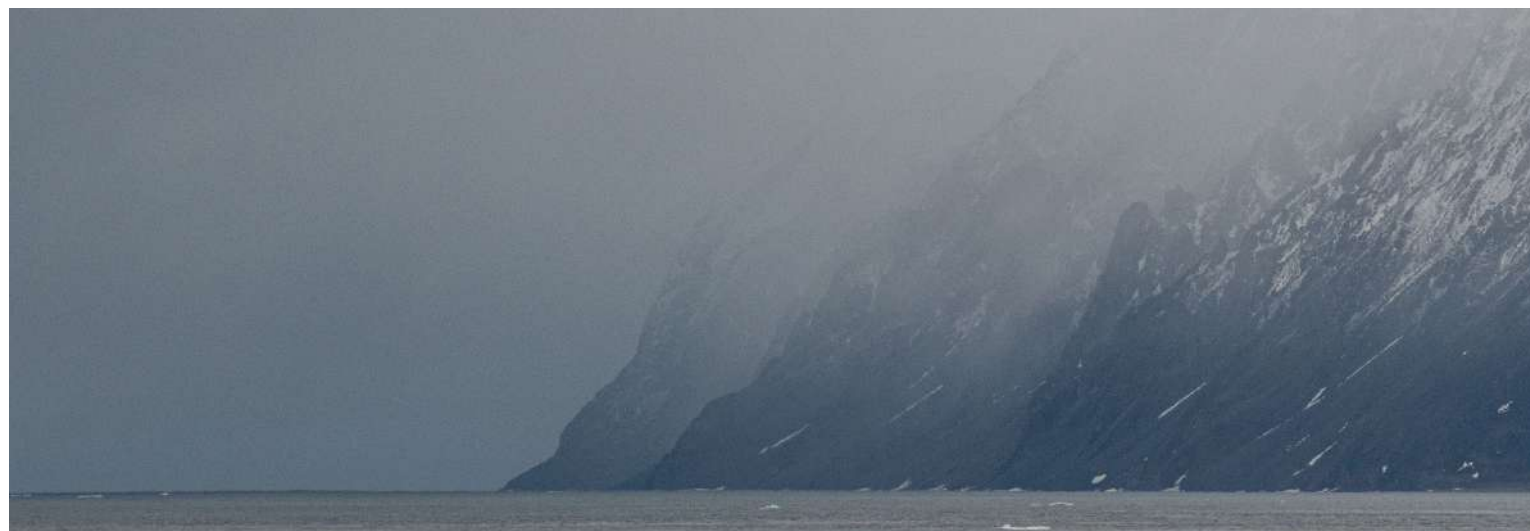
Air Temp:  
4°C

Baffin Bay was nearly flat and calm with just a breath of wind making for another gentle day at sea. As the fog rose and fell, we could see that the skies were completely overcast. Without even the flash of whitecaps our world was grey above and grey below with our ship seeming to hover in the middle of this monochrome existence.

Our Expedition Team kept us entertained and informed with lectures by our glaciologist, Gaby, and historian, Nina. Gaby told us of the story of the ice while Nina continued her tale of the fabled Northwest Passage.

As we began to track due west, leaving Greenland in the mist, the

weather took on an oscillating pattern peculiar to the open sea. The fog would lift then settle again, sometimes obscuring the horizon, sometimes creeping in close to the ship. The high stratus clouds would occasionally break up, revealing pale blue skies, then close in again, blanketing us in rolling patterns of brilliance and shade. The mix of shadows and light gave the illusion of a vast, undulating sea with long golden flashes marking the crests and charcoal streaks describing the troughs. Icebergs would appear on the horizon, looking like floating castles, then shrink as they drew nearer, only to pass harmlessly by, dwarfed by our ship.



# At Sea

DAY 8 | Sunday 28 July 2024

Latitude:  
73°54.4' N  
Longitude:  
075°26.8' W

Course:  
185°  
Speed:  
8.2 kn

Wind Speed:  
4 knots NE  
Barometer:  
989 hPa

Air Temp:  
4°C

We continued West on our second day at sea – en route to our destination of Pond Inlet (Mittimatalik), Nunavut. Fully rested, the residents of the *Sylvia Earle* started their morning with a hearty buffet breakfast as we looked forward to a day of educational programming as well as a tour of the bridge!

Naturalist, Dot, got things rolling with a morning lecture 'Birds of the Arctic' giving an overview and descriptions of the species-types that one can see on this voyage. She was assisted by Adam and Kevin in revealing the true wingspan of these arctic birds – some of which proved quite surprising!

Historian, Nina, was next with 'Franklin, Part I' as she delved into the origins of the ill-fated Franklin Expedition and gave us a snapshot of the who's who, and how it all came together to create one of the most famous stories of 19th-century arctic exploration.

As we are entering Canada, we had a few additional mandatory tasks to complete. Archaeologist, Maria, gave a short overview of arctic history 'Exploring Arctic Archaeology' (with Pond Inlet additions by cultural specialist, Mariah) as well as a Government Nunavut briefing regarding regulations and protocol on how we visit and interact with heritage sites.



# Pond Inlet

DAY 9 | Monday 29 July 2024

Latitude:  
72°41.9'N  
Longitude:  
078°00.1'W

Course:  
At Anchor  
Speed:  
At Anchor

Wind Speed:  
4.5 knots NE  
Barometer:  
996 hPa

Air Temp:  
6°C

Adam was up first with his very informative lecture, 'The North Water Polynya.' A look at the nutrient-rich water north off Baffin Island that has supported a whole ecosystem for millennia. Next was Gaby with 'Ice Cores and Climate Change', which investigated how our planet's climate has changed over the course of millions of years. This lecture certainly generated a lot of questions from the audience.

Then, it was time for lunch at which point, we received word the ship was clear, hence we could stick with our plan to go ashore for the afternoon. That meant it was into the Zodiacs for a dry landing onto a floating jetty within a protected marina. Once ashore we were divided into groups of approximately ten, with each group having a local guide for a guided walk around the town.

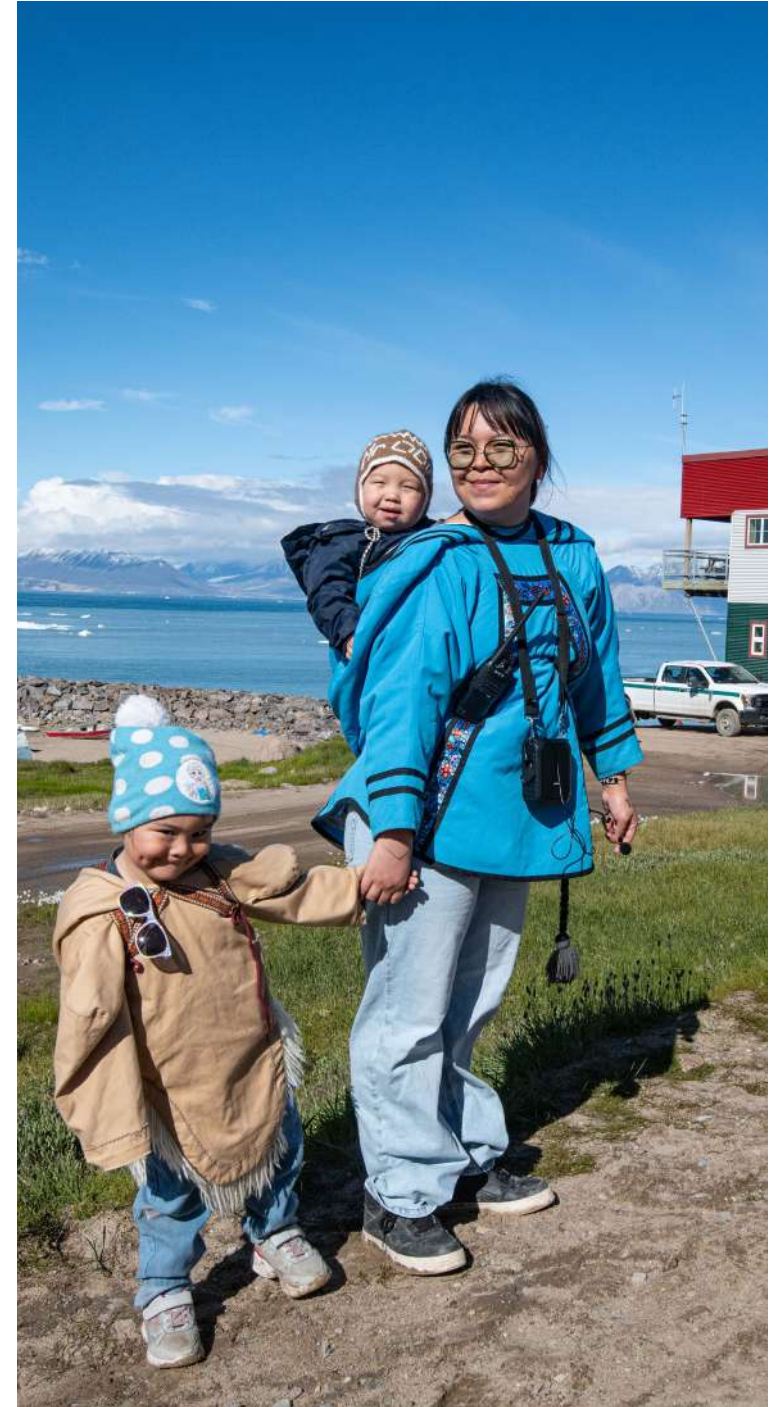
We visited a reconstruction of a sod house; the visitor centre, which had an excellent display of life in this Inuit community (especially the importance of hunting); and the Co-op (a one-stop-shop with everything from baked beans to ATVs). We then passed by the newly opened fitness centre, health centre, library, and school.

All the tour groups then met at the community centre for a cultural demonstration, including sport, games, singing, and dancing. It was lovely to see how passionate everyone is about their culture and how important it is to keep it alive.









# At Sea & Dundas Harbour

DAY 10 | Tuesday 30 July 2024

Latitude:  
74°01.9'N  
Longitude:  
79°21.9'W  
Course:  
295.3°  
Speed:  
11.5 knots

Wind Speed:  
35.7 knots W/SW  
Barometer:  
999 hPa  
Air Temp:  
3°C

The day began with an unexpectedly turbulent morning in Lancaster Sound, characterised by strong winds and waves.

Our incredible historian, Nina, delivered a captivating lecture titled 'True Northwest,' focusing on Sir John Franklin's expedition to the Northwest Passage. This was part two of her series, covering the search from Franklin and his men from 1847 to 1859.

Following Nina's lecture, we had the pleasure of learning about the history of kayaking from our knowledgeable kayak guide, Liz. She shared fascinating insights into the origins of kayaking in Greenland and how this traditional craft evolved globally.

As the day progressed, the sea began to calm, allowing us to continue our journey to Dundas Harbour.

Finally, we set foot on Devon Island, a place steeped in history. The winds persisted, though they were gentler than in the morning, and the blue skies and sun provided a picturesque backdrop for our exploration. Walking through this historical site, we felt a connection to the past, imagining the lives of those who once inhabited the area between 1924–1951.





# Croker Bay

DAY 11 | Wednesday 31 July 2024

Latitude:

74°45.4' N

Longitude:

83°13.8' W

Course:

359.3°

Speed:

6.4 knots

Wind Speed:

15.2 knots N

Barometer:

1005 hPa

Air Temp:

3°C

After breakfast, we were in position on the eastern side of the bay to start a Zodiac cruise in the same calm conditions we awoke to, with five and a half knots of breeze. As we had spotted several walruses, we headed into a small bay and had a good look at two separate groups of these amazing animals. Moving up towards the tidewater glacier, some of us did a little Citizen Science and others focused on photography while we all enjoyed the high cliffs and scree surrounding the bay. Several harp seals kept an eye on things as a katabatic wind came in from the top of the island, which made for an interesting trip back to the ship, not least of all for the kayakers.

During lunch, we repositioned slightly south and closer to the shore in readiness for our afternoon walk along the rocky lower slopes and

flat bench, with its wildflowers, bear and musk ox scats, small fossils, lemming burrows, freshwater lakes, and bogs. All of this and the great views back to and up along the bay cut into the 400-million-year-old Devonian sandstone, which Rene told us more about at recap later in the day.

Most of us had already had a polar shower in the morning (although there was some talk about kayakers' dry suits not quite counting). By late afternoon, though, the marina was ready for the truly intrepid few - the Polar Plungers. As the plungers plunged, they were encouraged by the Expedition Team below, the audience on upper decks, and by the thought of the freshly filled pool, Jacuzzis, and sauna waiting up top.





# Port Leopold & Prince Leopold Island

DAY 12 | Thursday 1 August 2024

Latitude:  
73°48.9'N  
Longitude:  
87°27.9'W

Course:  
240.8°  
Speed:  
13 knots

Wind Speed:  
15.2 knots E  
Barometer:  
1002 hPa

Air Temp:  
6°C

The morning educational programming included a lecture by glaciologist, Gaby, who presented an insightful overview of the formation processes related to sea ice; the differences of arctic vs. antarctic locations and the issues that surround global climate change. Cultural specialist/local Inuk guide, Mariah, followed with a wonderful telling of *The Story of Inuuira*, a personal account from author Brian Koonoo (of Pond Inlet) who recounts his story of overcoming striking adversity during a solo hunting expedition within Canada's wild arctic region.

While the afternoon brought fog and icy conditions, the Expeditioners of the *Sylvia Earle* were not deterred and we enjoyed a Zodiac cruise as well as a kayak session past Port Leopold – a multi-

phase historical and archaeological site. Through the mist and fog, the solitary remains of a Hudson Bay Company trading post loomed ahead as well as the outline of an engraved stone related to the search of the Franklin Expedition – often referred to as the E.I. stone - erected by the searchers aboard the ships *Enterprise* and *Investigator*, who over-wintered at Port Leopold in 1849. Further along, the remains of early Inuit whalebone structures are also located in the area, but unfortunately, they could not be seen from our Zodiac position as the fog proved too mighty. A solitary walrus was spotted as we quietly made our way through the shallow, icy waters.







# Sea Ice

DAY 13 | Friday 2 August 2024

Latitude:

74°24.8'N

Longitude:

92°24.7'W

Course:

315.2°

Speed:

0.1 knots

Wind Speed:

9.1 knots NNE

Barometer:

1004 hPa

Air Temp:

9°C

After spotting a handful of seals here and there on our route, we decided that it was time to gather in the lecture room for the last of the instalments of our expedition historian, Nina's, tale of the famously ill-fated Northwest Passage expedition led by a one Sir John Franklin. In her talk, Nina captivated us all with insight into the various ailments that could have beset the expedition and led to its untimely end, and she wrapped up with some information on the fascinating underwater archaeology work that has been done in recent decades to help find the wrecks of Franklin's trusty ships: the HMS *Erebus* and HMS *Terror*.

Due to a chance spotting of a sizeable ice flow that could perhaps be the site of a fun afternoon activity, the Expedition Team launched their Zodiacs and went out to scout the nearby conditions. After deeming the area suitable for a landing, we gathered up in our Zodiacs for a fun ride to a nearby piece of sea ice, where we had the opportunity to walk over the frozen sea and even snap a few pictures in the process. On the way back to the ship, we were even treated to some hot cocoa, which seemed the perfect end to an excellent afternoon.





# Beechey Island & Radstock Bay

DAY 14 | Saturday 3 August 2024

Latitude:

74°24.8'N

Longitude:

92°24.7'W

Course:

315.2°

Speed:

0.1 knots

Wind Speed:

9.1 knots NNE

Barometer:

1004 hPa

Air Temp:

2°C

The final full day of our expedition started off in a sea of fog.

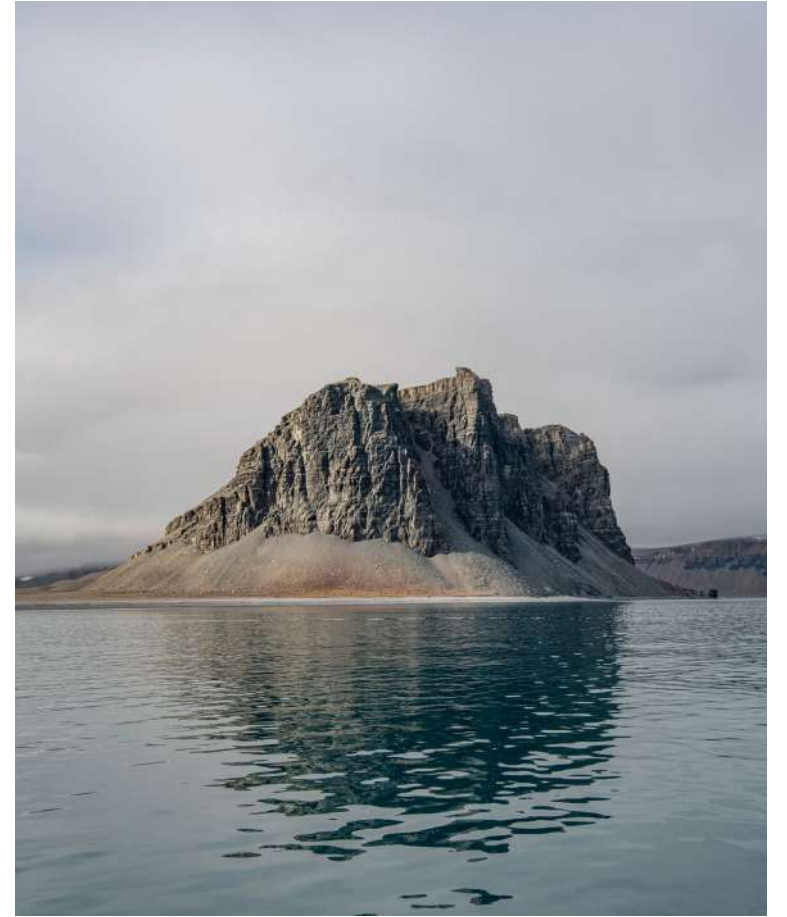
While such fog can wreak havoc on our activity plans, we opted to stay the course and wait to see what the day would bring. Since the fog prevented us from sticking to our original timings for a post-breakfast walk ashore at the much-fabled Beechey Island, we first gathered up in the lounge for our disembarkation briefing.

Afterward, the fog seemed to lift just high enough to make some sort of off-ship activity possible, but we weren't quite sure precisely what that activity might be. Thankfully, the fog moved in our favour,

and soon enough, the Expedition Team were launching the Zodiacs so that we could enjoy some time on shore.

Although the conditions weren't exactly ideal, we managed to pull off a landing, much to the delight of the entire ship. Beechey Island is the final resting site of three of the men from Franklin's ill-fated Northwest Passage expedition, as well as of two additional men who died in search of the expedition itself. For many of our number, a visit to Beechey was a central focus of our trip to the Arctic, so it was truly fantastic that we were able to make it ashore, despite the ever-changing and variable conditions.





# Resolute Bay

DAY 15 | Sunday 4 August 2024

---

Here we are at the end of our adventure! Thank you for joining us on this magnificent Northwest Passage voyage. We hope to see you again on the high seas someday.



BBQ



# Polar Plunge





# Kayaking Log

with Kayak Guides: Liz MacNeil & Gabby Bruce

---

23 July 2024, PM – Ilulissat Ice Fjord,  
West Greenland 6.8km

Welcome to Greenland! Following our visit to Ilulissat and the Icefjord Museum, we were excited to get out on the water to get an opportunity to experience paddling around in the large icebergs of Kangia Glacier. We took a Zodiac out to the edge of the icefjord and paddled in and along the outside perimeter of the largest icebergs yet. A number of them were 30–40 metres tall, and some had small waterfalls coming off them. The sizes and forms were impressive. Many of them were completely grounded, with undercut shelves indicating the tidal changes and how much the icebergs were melting. This was such a pretty paddle and we made sure to take a few moments of silence to appreciate our surroundings. After some photos and smiles, we made our way back to the ship and we're excited for our kayak adventures to come!

24 July 2024, AM – Niaqornat Bay,  
West Greenland 1.3km

Glassy waters and mystical skies greeted us this morning as we made our way to Niaqornat, a small Greenlandic Inuit community. Being the first paddle for many of us this voyage, we had a quick safety talk and then launched from the ship onto the glassy waters. It was just like riding a bike and it felt great to be back on the water! We paddled along the community bay, which was adorned with basalt cliffs, orange lichens, green mosses, and the random ice berg and bergy bit. Getting off the water, we had time to explore and take in a little of what it's like to be here and experience the Village at the End of the World.

25 July 2024, PM – Singarnaq Island,  
West Greenland 7.5km

Being in expedition mode, we weren't sure what Greenland would hold for us. Kayaking





Number of Kayakers: 7  
Total Paddle Outings: 7  
Total Distance Paddled: 40.3 km

Kayakers:  
Deven Billimoria  
Angie Pinto  
Ernst van der Veen  
Diane More  
Gary Gintant  
Maryanne Gintant

Hella Stratton

was cancelled in the morning due to winds and swell, so we crossed our fingers to have the conditions to paddle at Singarnaq Island. It was a bit sporty as we launched in the bay, warming up our kayaking muscles, and as we made it around the corner and to the north side of the island, we were deeply rewarded. Calm seas, glacial fjord views with towering cliffs, and a colourful coastline to explore. Paddling around the corners, we came across waterfalls, eider ducks with their chicks, and fun features in the coastline to practise our kayaking skills. ... exploring sea caves and waterfalls was a blast and a great surprise to this surprise excursion!

### 26 July 2024, PM – Red Head, West Greenland 6.8kms

Yet another awesome paddle and our first excursion with the whole team joining! With seven kayakers and Gonzalo joining our journey as well. Red Head was a completely new area for everyone on board, including the Expedition Team, so we were all very eager and excited to explore this new area.

After the scout boat had completed their polar bear safety check and scout of the area, we were given the 'all clear' to go ahead with operations. The kayakers set off with a quick tow to reach the coastline. We were thrilled to explore the beautiful coastline with caves and many nooks and crannies to explore. Eider ducks and guillemots were scattered around on the water and overhead. The cave formations and mixture of the Greenland gneiss and basaltic rock were great to marvel at with some helpful information of geology from Gabby/Scooter!

After our up-close-and-personal contour of the coast we went iceberg navigating, where we found some stunning bergs and, of course, Liz's favourite, brash ice! After navigating our way through the ice we paddled our way back to the ship.

### 31 July, 2024, AM – Croker Bay, Nunavut 7.1kms

The morning began early at 6am with a ship's cruise into the depths of Croker Bay.

The pristine flat calm, conditions set us up well for the morning's kayak! Onto the water we jumped, launching from the ship with our fearless leaders Liz and Gabby (Scooter) on the water. All was well until a katabatic wind whipped up from nowhere, and we paddled hard towards the coast! With this in mind, we found shelter in the ice and bergy bits near the coastline, taking a much-needed break, whewwww! As we navigated through the growlers, the winds died down as we followed Scooter through gaps and turns, which was beautiful and exciting!

Making our way towards the towering glacier, Scooter spotted critters in the water of her favourite kind! Sea butterflies, sea angels, medusa jellyfish and ctenophores (also known as comb jellies)! Much to her excitement, she collected a bunch to check out for Citizen Science.

Our kayak excursion ended with paddling in the brash along the calm waters of the glacial front. We called Gabby, our Uber driver, and started to make our way back. All was well until another katabatic came in,

swamping a couple of kayaks on tow. Help arrived from our lovely team member Nina and everyone piled into her Zodiac to make the journey back without the burden of the kayaks while Liz, Scooter and Gabby had an entertaining journey with kayaks back to the ship!

### 01 August 2024, PM – Port Leopold, Nunavut 7.5kms

As we sailed towards Port Leopold on Somerset Island the fog was looming. Upon arrival we noticed the fog was slightly higher and we were able to get a view of our surroundings. As it wasn't possible to land due to fog and polar bear safety, we committed to a full kayak excursion exploring sea ice, as the fog was high enough to enable a safe kayak journey. And what an adventure it was!

We began weaving our way through the sea ice in the calm, sheltered conditions, with many black guillemots and fulmars flying overhead. There were many moments of Zen and we paddled through the ice,



spotting a few seals watching us from afar. We decided we could use our kayaks as perfect ice dozers, ploughing ourselves onto small ice floes, and sliding comfortably on/off, taking a short rest when needed.

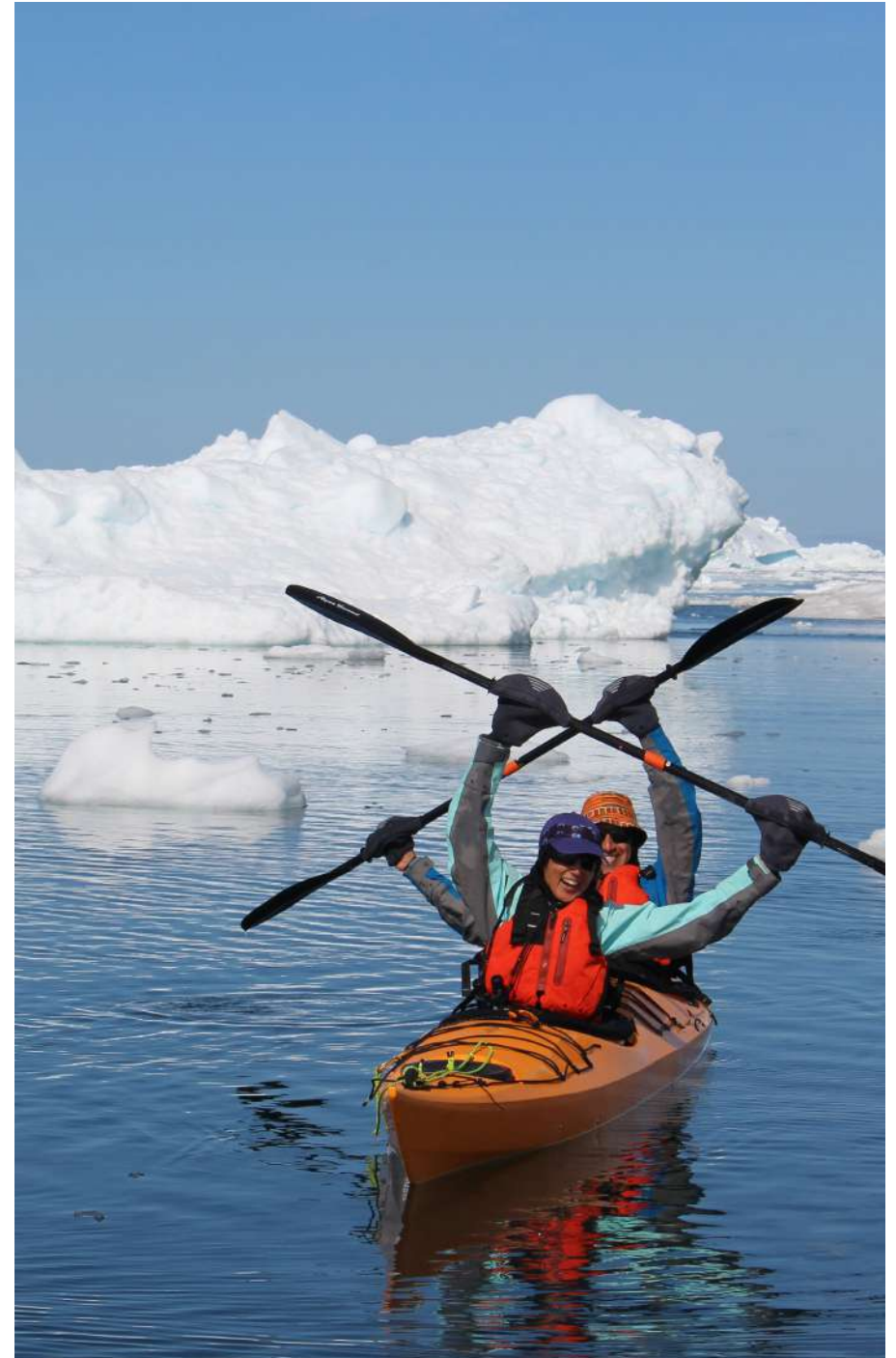
We ducked and dived through a lot of sea ice, choosing the path of least resistance to make our way back to the ship. Suddenly we met some resistance where we had to practise our ice-dozing skills to make our way back to our now-repositioning ship. Great effort and fun were had by all, making it a very memorable kayak adventure for everyone!

03 August 2024, AM – Beechey Island, Nunavut 3.3 km

Our last paddle in the Northwest Passage and we were on our toes as to whether or not it would happen. The fog rolled in/out all morning as many different plans were being made on board. As the fog started to dissipate, we had a window and we were back to our Plan A (oops Plan C) and what an ending we had. The water was glass as we took the Zodiac with

kayaks in tow towards the remains of the North Cumberland house and a Franklin Expedition historical site.

As we launched our kayaks by the sea cliff, the sounds of our voices echoed in the Mordor-esque caves above. Fulmars and black-legged kittiwakes flew above us and the ethereal feeling of the cliffs emerging from the fog was a beautiful moment of Zen as we looked up. Making our way along the cliff and shoreline we paddled, taking in every last moment. As we got back into the Zodiac, we toasted the anniversaries of Deven/Angie and Gary/Maryanne, and we were reminded of what a special time we had paddling with each other through the Northwest Passage!





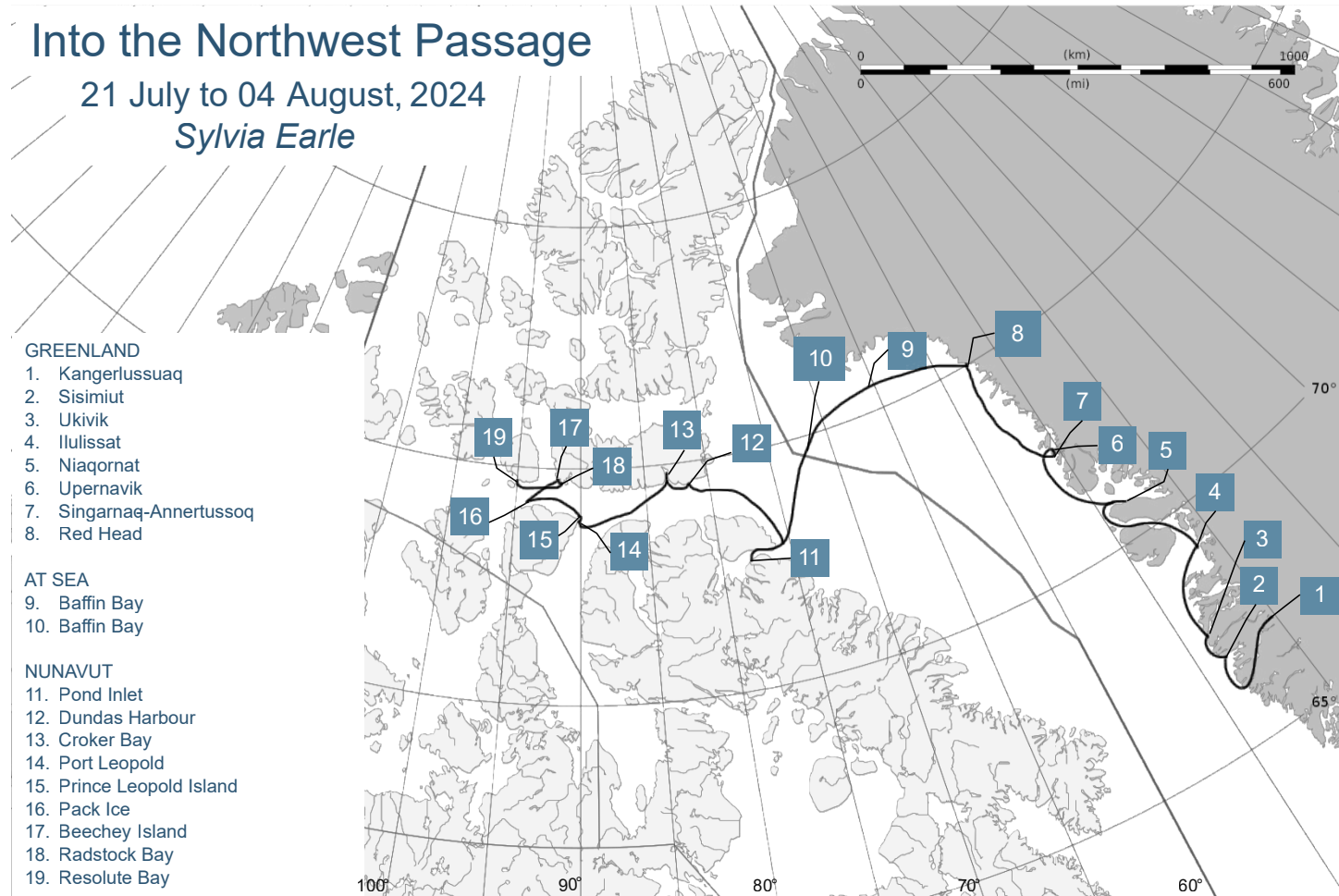








# Map



## Northwest Passage

21 July – 4 August 2024





# — Our Expeditioners

Stephen Allworth

Margaret Atkinson

Kevin Atkinson

Susan Bazelides

Paul Bazelides Jr

Sophie Beaudoin

Devendra Billimoria

Alexander Burridge

Jack Burridge

Jeff Colhoun

Terry Cronan

Pamela Cronan

Soraia de Almeida

Martins Pereira

Janet Gidley-Baird

Hamish Gidley-Baird

Roger Giles

Maryann Gintant

Gary Gintant

Lettie Goehringer

Charles Goehringer

Carmela Gosse

Gary Gosse

Delwyn Harrison

Raoul Harrison

Jacqueline Huskisson

Niall Huskisson

Frances Ilyine

Derrick Ironside

Nicholas Koorey

Jennifer Koorey

Harry Kraemer

Mary Kraemer

Roberta Lay

Russel Lay

Beth Limberg

Phil Limberg

Malayah Maloney

Cassandra Mani

Andrew Marshall

Bill Maxwell

Andrew McDougall

Thomas McKinnon

Jennifer Milstein

Diane More

Marie-France Mousseau

Julie Parker

Linda Peterson

Angie Pinto

Lisa Rasch

Guy Rasch

Barry Reiter

Helen Reiter

Sarah Riches

Grady Rogers

Judy Russell

Peter Russell

Cynthia Sackett

Ernie Sackett Jr

John Stoddard

Jeanine Storrs

Hella Stratton

Kelly Taylor

Michael Taylor

Firat Tecirli

Joseph Tenne

Miriam Tenne

Ernst van der Veen

Hans Vernimmen

Eugene White Jr

Adrian Williams

Cori Williams

Frank Wilson Jr

Els Zaat

Gregory Zawierucha

Linda Zawierucha

Juliana Zola Araujo

# — Special Guests

**Inuit Community Ambassador & Very Special Guest:**

Malayah Maloney

# Expedition Team

**Expedition Leader:** Alex Cowan

**Assistant Expedition Leader:** Elena Wimberger

**Onboard Expedition Manager:** Samantha Deer

**Onboard Expedition Assistant:** Reza Rusooly

**Photography Guide:** Stas Zakharov

**Firearms Manager:** Rene Olsen

**Geologist/Glaciologist:** Gaby Pilson

**Marine Biologist/Citizen Science:** Adam Pope

**Naturalist:** Dot Robertson

**Cultural Specialist/Local Inuk Guide:** Mariah Erkloo

**First Responder/Medic:** Solvi Jensen

**Zodiac Manager:** Serghei Hincu

**Historian:** Nina Gallo

**Permitting Archaeologist:** Maria Lear

**Lead Kayak Guide:** Liz MacNeil

**Kayak Guide:** Gabby Bruce

**Musician/Expedition Guide:** Kevin Closs

# Senior Officers & Heads of Department

**Master:** Jorge Ferdinez

**Chief Officer:** Andrey Gilevskiy

**Third Officer:** Bryan Salem

**Safety Officer:** Andrus Pruul

**Bosun:** Francisco Flores

**Ship Doctor:** Gloria Gonzalez

**Chief Engineer:** Srdan Jakovic

**1st Engineer:** Peter Alyenkov

**IT Officer:** Rene Reyes

**Hotel Director:** Balvant Singh

**F&B Service Manager:** Narendra Seeram

**Head Bartender:** Juan Carlos Gonzalez

**Chief Purser:** Jonalyn Galve

**Executive Chef:** Ronwaldo Reyes

**Sous Chef:** Alexander Mungcal

**Hotel Controller:** Alfredo Jr. Laquian

**Receptionist:** Kutsi Vazquez

**Receptionist:** Angeli Perona

**Head Stateroom Attendant:** Alexander Bartolome

**Able Seaman:** Rosendo Cruz

**Able Seaman:** Rajiv Rauinyar

**Able Seaman:** Anthony Brosas

**Able Seaman:** Muhammad Karier

**Able Seaman:** Lexter Fradiquela

**Able Seaman:** Eduardo Aloyan

Photography thanks to:

Stas Zakharov





 [facebook.com/auroraex](https://facebook.com/auroraex)

 [@aurora\\_expeditions](https://@aurora_expeditions)

 [youtube.com/auroraexpeditions](https://youtube.com/auroraexpeditions)

 [Aurora Expeditions  
\(@Polar\\_Experts\) / Twitter](https://Aurora Expeditions (@Polar_Experts) / Twitter)